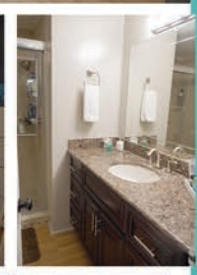
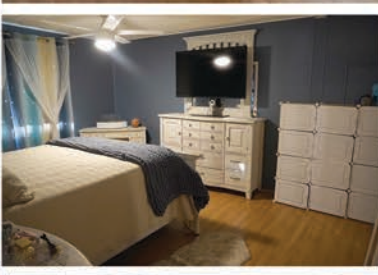


# 333 Turquoise Terrace

For  
**SALE**

Home size: 24' x 53'  
Square Feet: 1,272  
Porch/Extra S/F: 120  
Year: 1979  
Bedrooms: 2  
Bathrooms: 2  
Furnished: No  
Flooring: Laminate Wood  
Laundry: In Shed  
Appliance/Equip: Refridge., range, micro, dishwasher, washer, dryer  
Lot Desc: Interior  
Lot Size: approx. 4,000 S/F  
Irrigation Well: Yes  
Assoc Fee (Optional): \$10.00/yr  
Monthly Lot Rent: \$685.00  
(includes cable, garbage, & amenities)



## Pinelake Village

A 55+ Manufactured Housing Community



- New kitchen with modern coastal colors. French door refrigerator and plenty of storage.
- Large living and dining room with lots of windows
- Updated bathrooms with tiled showered surrounds and vanities with granite countertops
- Florida room is great additional living space
- Irrigation system updated



Please visit our website for additional info & pictures [www.PinelakeVillage.com](http://www.PinelakeVillage.com)

Please call to arrange a private viewing **Vicki Mattucci, Sales Agent** 772-201-2685 cell or 772-334-1414 office

